

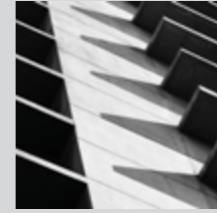
COMPANY PROFILE

2023

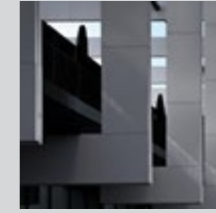
www.newplanddevelopments.com



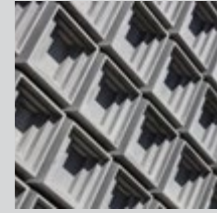
TABLE OF CONTENT



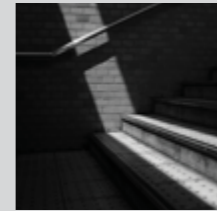
01
THE
STORY



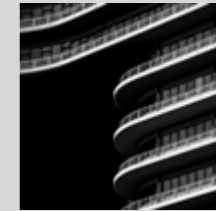
02
WHAT
WE ACE



03
WHAT WE
SERVE



04
THE
PROOF



05
MORE
ABOUT US

THE STORY

01



OUR BACKBONE

Be it in Egypt or abroad both Mr Walid Khalil & Youssef Saddik have worked collaboratively hand in hand for such a long time excelling in everything they have ever managed. The following are just a glimpse of the Projects chaired by Mr Walid Khalil & Youssef Saddik throughout their long reputable careers. Moreover, the annual revenue of these ginormous projects is an estimated staggering 2 Billion US dollars



Shareholders:

ENG. Walid Khalil

Mr. Hussein Hammam

Mr. Youssef Saddik

CEO

Eng. Walid Khalil



CEO

Eng. Walid Khalil

Introduction:

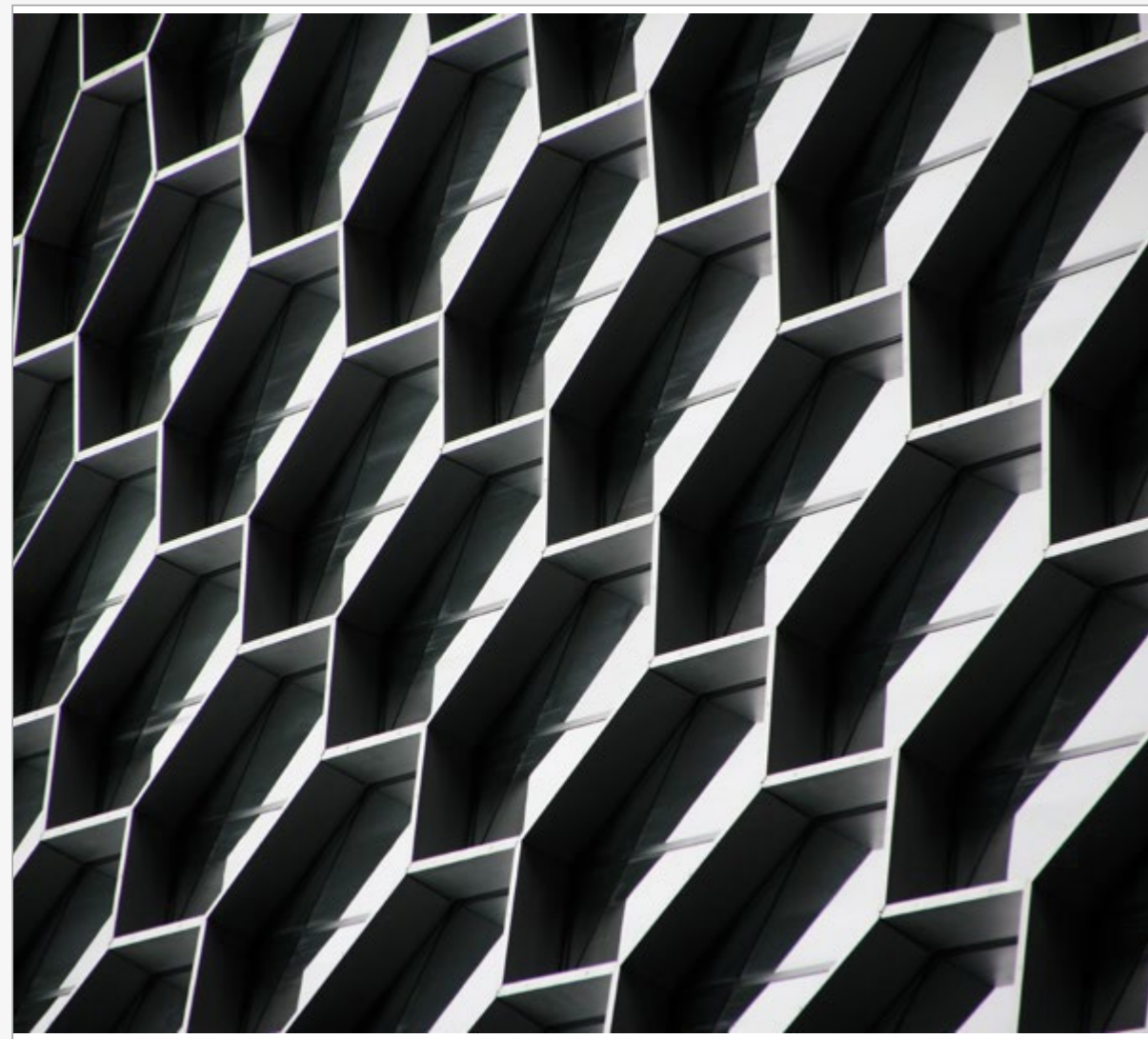
Mr Hussein Hamam & Youssef Saddik
our chairmen of
the following companies

Projects by
Mr Walid Khalil & Youssef Saddik

Golden Sun Duty Free
Egyptian Libya Duty Free Shops
Tobruk Duty Free
Arab Company for Logistics & Transit
Pioneer Egypt Shipping Agencies
Global Overseas Maritime LTD
Mediterranea Shipping & Trading
Diamond Oasis General Trading L.L.C Dubai
Al Ashrafia Holiday homes reuntel

Projects by Mr. Walid Khalil

AlRashed contracting company (KSA- CLASS 1)
AlKhalil Construction company (KSA- CLASS)
AlKhalil Marble Factory (KSA)
AlKhalil Plastic Recycle Factory (KSA)
AlKhalil construction company (EGYPT)
Ocean Club Hotel (Sharm ElShiekh, Egypt)
Rozy Travel (Tourism company)
AlMarai Company (Branches at AlQasim, Hafr albaten, Arar, Alkharj)
AlEmam Mohamed Ben Saud University (Branches At Makkah,
Jeddah, Alezdhar)
AlEmam University (Riyadh Medical center)
Al Babtin tower (King Fahad Road, 21 floors)
Ministry of Health (Dentist Medical Center)
Al Rashed Tower (at Makkah, 18 floors)



OUR STORY

New Plan Developments is creating art that blends Egypt's ancient past with its vibrant bright future that is yet to come, in order to satisfy all the needs of Egyptian Families, youth & Businessmen.

Al Rashed Construction Company was founded in 1991 in Saudi Arabia and has a history of over 83 successful projects that includes compounds, hospitals and universities.

The construction company is specialized in Mechanical engineering, Electrical engineering, Technologic engineering and Infrastructural engineering.

After developing more than three Projects in the New Capital already, Serrano, Eleven & Atika respectively...

New Plan Developments successfully managed to sell out SERRANO in just 6 Months, which is what later led New Plan Developments to take steps into investing in the educational system by building its first International School in The New Capital in R7-SCHO9 South of Serrano.

New Plan didn't stop there and decided to expand and explore new territory, so the chosen destination was "Port Said" to launch its 5th project Eclat.



WHAT
WE ACE
02



MISSION

To make your community become your home, brimming with life and everything you love. Because home isn't just a place, it's a feeling, and that's what we promise to deliver to you.

To provide an outstanding level of service & expertise in the real estate market, that is both innovative and ambitious. Needless to mention that we are also dedicated to meet the absolute highest standards and perform at the necessary levels to fulfill all your dreams.



VISION



Our goal isn't simply to build properties, we strive to shape communities that people love to live and work in.

To go above and beyond to deliver an experience that is fulfilling for our customers. Our company will dominate the real estate market and excel in every facet of its operation including client satisfaction, operating system, team development and profitability. We will achieve this by :

- Excelling and being consistent in everything we provide.
- Being motivated and spreading our enthusiasm.
- Building trust, maintaining quality and integrity are the hallmarks of the way we do business.
- Seeking always to be innovative and seeking continuous improvement.



WHAT
WE SERVE
03

CORE VALUE



DESIGN



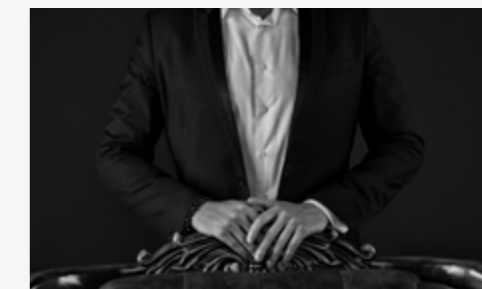
COMMITMENT



QUALITY



DEDICATION



LUXURY



THE
PROOF
04

SERRANO

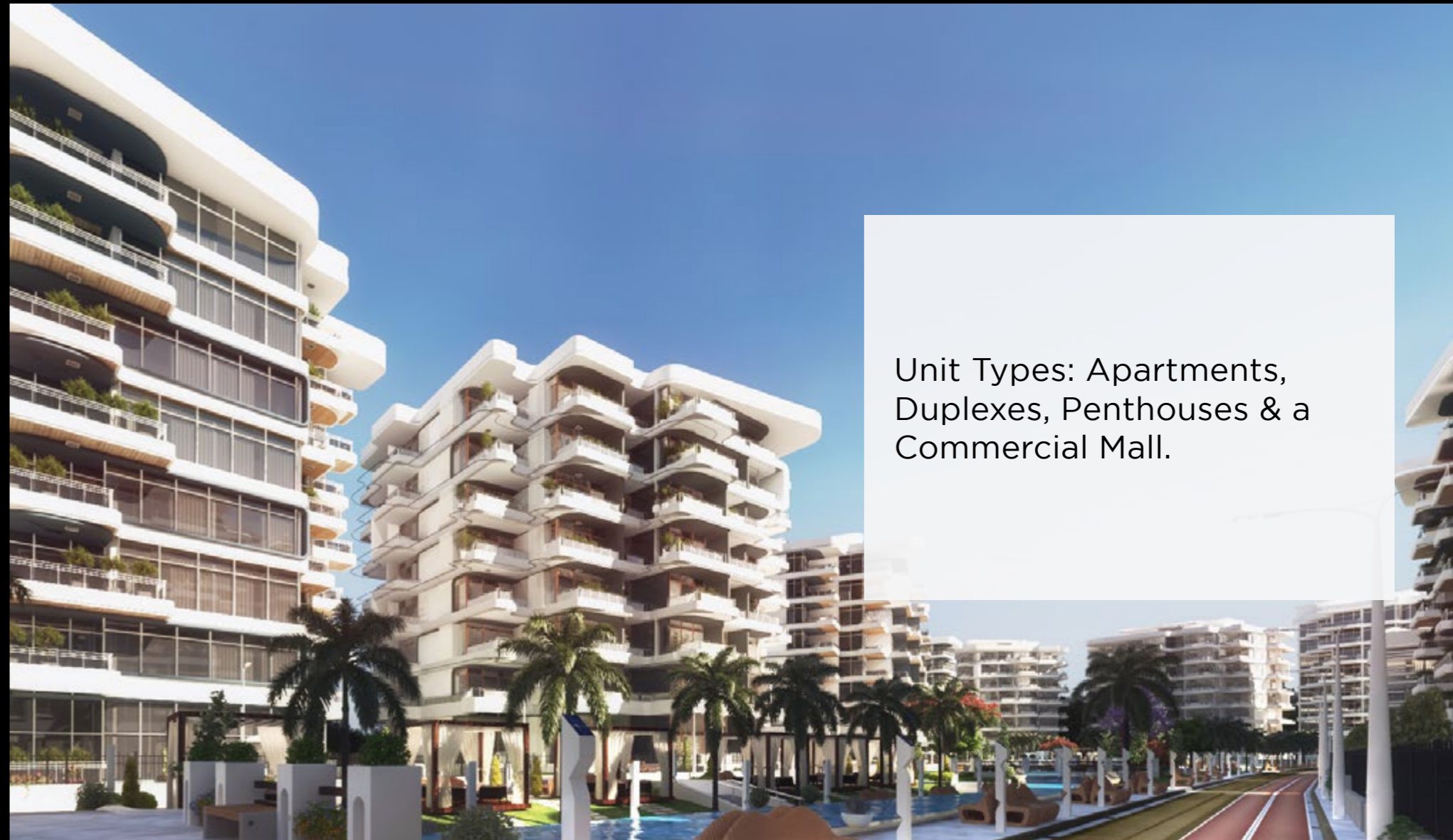
NEW CAPITAL



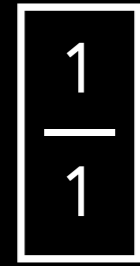
Presenting a refreshing new look at modern living,
with welcoming green spaces, invigorating fresh air and sunlight,
and modern design



New Plan Developments started its first project «SERRANO» in 2018, SERRANO is a high class smart compound that is built over 15 Acres of land with 82% Greenery and is Located in the Prime Location R7-N1 .




Unit Types: Apartments, Duplexes, Penthouses & a Commercial Mall.



ELEVEN

NEW CAPITAL





Developed in 2019, New Plan Developments launched ELEVEN after the success of their first project in the new capital!

ELEVEN is a Luxurious Business Building Located in the B11-1 that it's a landmark to the Financial and Business District .



Tonino Lamborghini



Tonino Lamborghini's vision
brought to life through a sharp concept design, made possible in the very heart of the New Capital.
Enjoy your luxurious unit with New Plan.

The Lamborghini Residences is our newest addition to the New Capital residential projects' scene and we are confident that this project will bring a much awaited series of luxury projects to our unique clientele.

The exquisite lines and sharp accents inspired by Tonino Lamborghini's characteristics - speak for our design intentions to create an unforgettable yet serene experience which mimics that of a Lamborghini's. This will be possible through adding a blend of maturity and elegance with a sense of dynamism.

To view more exterior images of this project visit Mimar Group!



ATIKA

NEW CAPITAL



Fine-tuned to meet exceptional quality lifestyles, Atika comes to you with a dedicated concierge service, a fully operational visitor management system, immaculate water features, an exclusive club house, round the clock security and an all new grasp on modern living essentials.



And last but not least is the distinguished ATIKA, which is located in the New Capital plot R-7G1. ATIKA is composed of almost 35 Acres with %83 of the entire landscape made up of Greenery as well as with 3 Artificial lakes.>

With over 1500 units, ATIKA is meant to compete not only with developers, but is meant compete with the world highest Class of structure.

ÉCLAT

RESIDENCE



ÉCLAT is a uniquely developed compound in the canal gem “Port Said”, with a distinctive and classy look and a vibrant feel.



New Plan Developments chose this gem to allocate its newest project for its magic, and to rejuvenate. This old beautiful city's flair after losing the people's focus which was redirected to other coastal destinations.

ATIKA *mall*

LIFE . WORK . JOY



Atika is an extension of the prestigious Atika New Capital compound, serving as both a private & open commercial venue that completely flips the typical Egyptian commercial experience on its head.




Atika County is a refreshing insight into the full package of social, cultural, and also commercial activities.

Breathe new life into your daily routine and immerse yourself in a plethora of interesting new adventures, all in one place.

ط T A L A H

NEW CAPITAL





Talah New Capital is the eighth project by New Plan Developments in Egypt and its seventh project in the New Administrative Capital. Talah offer luxurious Apartments, Duplexes, and its unique double-height Alto Casa units along with its different facilities that inspire the mind, body, and spirit.

MORE ABOUT US

05

WEBSITE: www.newplanddevelopments.com

EMAIL: Info@newplanddevelopments.com

HOTLINE: 16534

LOCATION:

Head Office:

Business District, Off 90 St.,
Raya Building Land, Plot 133,
5th Settlement, Cairo, Egypt

Sales Center:

62 El-Thawra
St., Heliopolis
Cairo, Egypt



new PLAN
developments

