

RIDER SERVICES

Combined facilities support activities



General Cleaning. Hospital & Hyper Market Cleaning. Cleanroom Cleaning. Pest control. Combined facilities support activities (Reception, office boy, workers, Secretary). Hygiene Services. Landscape & Ground Maintenance. cleaning industrial and building.

About Us.

We offer full-fledged cleaning, Support Staffs, Pest Control, services To our customer.



Rider Services. We began to offering full-fledge of cleaning services to customer due to customer demand that push company to diversify its services in. We started off with cleaning services in food and beverages outlets, shopping malls and now we are expanding our services, cleanroom cleaning, hygiene service and landscape & ground and maintenance. Pest control. Combined facilities support activities (Reception, office boy, workers, Secretary).We are passionate about providing a flexible and customize service where every customer is treated equally no matter how large and small the contract value. We will ensure that every contract is maintained at the consistent level of quality by doing one-off spot checks or scheduled visits, tested process and methods delivered by our skilled employees.

Our areas of expertise include Industrial, Commercial, Corporate Office, Hospital and Residential Cleaning. We aim to provide quality service to our customer as we believe that clean and healthy environment is beneficial to one's physical and mental health.

At, Rider Services, we understand that establishing positive and effective leadership is a key factor in proving our customers with excellent services. We also implement Health &Safety and Recycling Policies that have been through both experience and knowledge and are in line with best practice management.

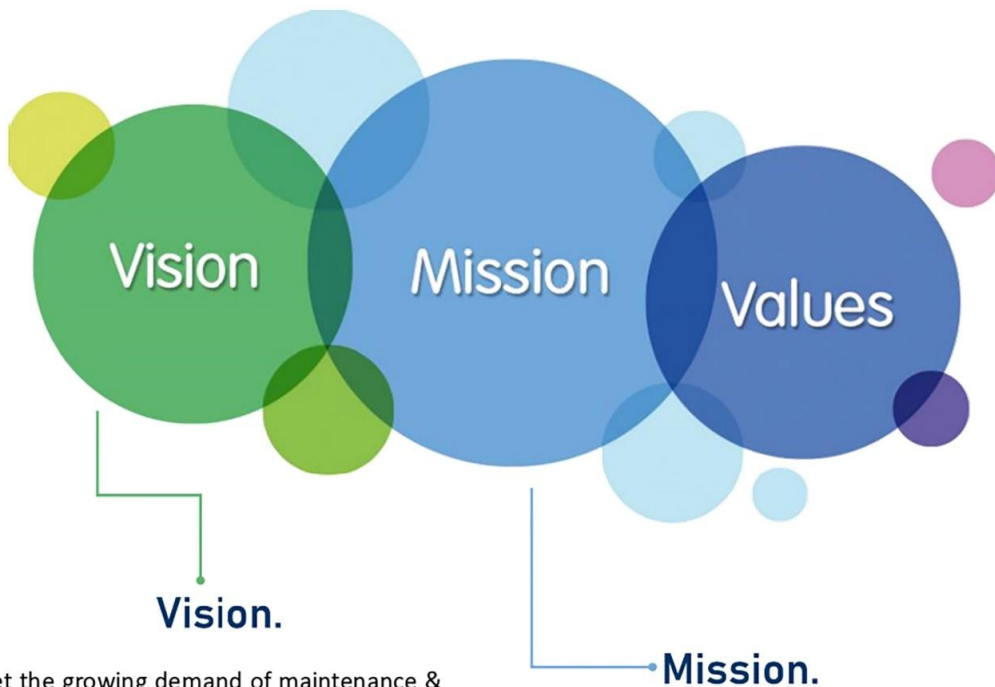
Core Value.

The eight important values are the building blocks that constitute Rider Services To ensure that our customer gets the best service.

- Continuous monitoring and training.
- Evolution and the always existence of an alternative.
- service and ultimately exceed customer expectation.



Principles. Vision. Mission



To meet the growing demand of maintenance & cleaning industry with the latest technology innovations in order to satisfy our customer requirements.

To provide professional cleaning services to both commercial and domestic customers that exceeds all expectation in regards to effectiveness, cost, environment and customers satisfaction.

Our Expertise & Services.

❑ Comprehensive General Cleaning

Comprehensive housekeeping service is the foundation of our Company. We specialize in offering a tailor made, comprehensive cleaning service for your business. Our team members are the most experienced professionals in the business and our proven methods provide healthy and safe working environments for our clients each and every day.

We provide service to:

- o Office building
- o Hospital
- o Bank
- o University/ College / School
- o Apartment / Condominium
- o Airport
- o Factories
- o Malls & Shops
- o Restaurants

▪ Shopping Mall Cleaning

Rider Services understands that clean, safe and orderly retail centers set the tone for a positive customer experience. We found that routine cleaning and upkeep is a key factor in maintaining customer satisfaction and loyalty for all shopping malls regardless of their business sizes. Thus, we have all the equipment, highly skilled and well trained cleaner to execute each task effectively during peak and off time hours to ensure your shoppers will have a pleasant shopping experience in your mall.

We service to:

- o Post construction cleaning
- o Comprehensive cleaning
- o floor cleaning
- o Pottering service – General waste, medical waste, linen
- o Pest Control
- o Combined facilities support activities (Reception, office boy, workers, Secretary)



Our Expertise & Services.

❑ Industrial & Cleanroom Cleaning

At Rider Services, all of our cleaning contract will be developed and customized according to customer needs and budget. We do both light and heavy cleaning work for industries such as processing plants, manufacturers, and warehouses. The work in industries is usually performed in unsafe and hazardous conditions, and generally requires specialized machinery, as well as safety equipment. Hence, all our cleaning specialist will be trained and learn all about safety knowledge before they could conduct the general cleaning works and continue the day to day maintaining and operation works at the industrial sites and cleanroom.

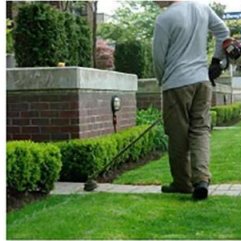


Our Expertise & Services.



Our Expertise & Services.

☐ Landscape & Ground



Our certified and insured landscaping employees is skilled at making a common exterior uncommonly beautiful. Whether it is installing new landscaping designs, restoring historic sites or simply maintaining the existing landscape with attentive landscaping service, we have the expertise to beautify your garden and bring out the richness of your facility, creating a lasting first impression that signifies quality.

Other services such as:

- Soft scape & hard scape
- Grass cutting & pruning
- Potted plant
- Turfing
- Weeding
- Fertilizing
- Pesticide



Employment Training Programme.

Our cleaning's employees are trained in the relevant aspect of cleaning duties.



Our cleaning's employees are trained in the relevant aspects of cleaning duties required of them. This comes in 4 stages:

- **Induction Training**

A full Health and Safety talk explaining the potential hazards of cleaning equipment and materials and an explanation of how these hazards can be found within everyday procedures. In addition, we undertake a demonstration of personal protective clothing. All our cleaning equipment is color coded, and employees are trained accordingly. Basic electrical equipment, (vacuum cleaners) is made familiar to cleaners with explanations of basic safety awareness and maintenance.

Finally, we go through the key issues which may arise in a cleaning environment which will help a cleaner to understand the procedures in the event of abnormal occurrences.

- **On Site Training**

This occurs in all our cleaning services with cleaning contracts. This work is heavily supervised and acts to ensure that a member of employees learns our special method of work. This is a system where work is checked once it is carried out to ensure all aspects of the cleaning specification are undertaken. It also helps us to distinguish the members of employees who are prepared to take a pride in the company and their work. Only members of employees who understand and act upon what is expected of them continue with us.

- **Specific Site Training**

This will include all aspects of a specific site. We recognize that every site is different and requires areas of particular attention. The member of employees is also trained with regard to the health and safety implications of a specific site as well as the security procedures of that particular site.

- **Ongoing Training**

This keeps employees up to date with any changes in materials of cleaning techniques used. All relevant changes will be introduced throughout the company and managers and site supervisors then carry out training.



Health & Safety Policies.

Our Health & Safety Policies has been organized, implemented and monitored with the Company.

This statement should be read in conjunction with the Health & Safety policies that set out our specific responsibilities and arrangements which Health & Safety is to be organized, implemented and monitored within the company.

- We are committed to provide a healthy and safe working environment for all employees and non-employees affected by our activities. We will use all reasonable endeavors to ensure safe systems of work throughout our business activities, and will do all that is reasonably practicable to ensure a safe & healthy working environment and safe working methods.
 - We consider that health & safety an important part of all our management systems and that clear communication and co-operation between management, employees and the customers are important in order to achieve a high standard of health & safety at work.
- The Company will:
 - Initiate and maintain a safe and healthy workplace, so far as is reasonably practicable to ensure that employees, customers, visitors, and the environment are not exposed to risks arising from our cleaning activities.
 - Ensure that employees have adequate support, supervisor, relevant health & safety documentation, information and training required, in order to make them aware of potential hazard within the workplace.
 - Ensure that no person intentionally or recklessly interferes with or misuses anything provided in the interests of health, safety or welfare.
 - Communicate with the employees on matters affecting their health & safety and the importance of reporting or eliminating hazards by encouraging them to bring to the attention of management any proposals for the improvement of health & safety standards, thereby allowing them to fulfill their duties safely without risk to themselves or others.
 - We believe in improving health & safety standards through constant monitoring and reviewing of our health & safety policies and procedures. A safe and healthy workplace can only be achieved if employees accept responsibility for their own health & safety and that of other persons who may be affected by their work activities. We should all work together in order to raise awareness of health & safety in the workplace and ensure that safety procedures and policies are adhered to.



Recycling Policy.

RIDER SERVICES. will work alongside your organization to ensure all Employees are restrained and ensure your recycling policy is correctly followed.

We go to great lengths to ensure our activities are environmentally sustainable. Working with and to our customer's guidelines we follow procedures to adhere to the following;

- Reduction of environmentally harmful chemicals.
- Energy and water conservations.
- Sustainability improvements included in job descriptions and Employees objectives.
- Increased provision of Fair trade goods.
- Commitment to working with the Environment Forum.
- Aiming for continual improvement on carbon emissions, recycling, water consumption, waste production, business mileage and use of sustainable products. All incidents, such as the spillage of chemicals, improper disposal of waste chemicals or other unnecessary emissions to water and the atmosphere must be prevented and reported to line management if they occur.



Control And Management Hotline

Continuous communication is our priority.

Therefore, we must train and provide replacements at all times.

You can be In Touch with our work team at 24h/7d in hotline number incase you need help or any requirements.

Control Room:

Tel: 36194007

Management:

Tel: 36194006 – 36194449 Email: info@riderbh.com

Manager:

Tel: 34570702 Email: Ahmed@riderbh.com

Our Clients:



Contact Us



Combined facilities support activities

Tel: 34570702 , 36194006

Email: Info@riderbh.com

Web: www.riderbh.com

Address: Flat: 11 Bld: K-460 R: 3215

BL: 523 SAR - Kingdom Of Bahrain