



# LET'S REDEFINE THE FUTURE OF WASTE MANAGEMENT

**WASTE IS NOT THE END—IT'S AN OPPORTUNITY.**

BIREX Solutions delivers smart, sustainable systems for cleaner, safer, and well-managed buildings.

GARBAGE & LINEN  
CHUTE SYSTEM

WASTE COLLECTION  
OPERATIONS

CLEANING &  
SUPPORT SERVICES

EQUIPMENT  
& MACHINES

CUSTOM BINS  
& TROLLEYS

[BIREXSOLUTIONS.COM](http://BIREXSOLUTIONS.COM)



## OVERVIEW

BIREX Solutions is a leading company in environmental services, **Garbage & Linen chute systems**, and waste management, operating in Lebanon since 2020. We specialize in the design, supply, installation, and maintenance of garbage and linen chutes, as well as providing a full range of integrated waste management solutions, including **food waste composting machines, Waste compactors, balers, and other waste-handling equipment and services.**

With years of hands-on experience in Lebanon and Qatar, BIREX Solutions is committed to delivering high-quality, reliable, and sustainable solutions for residential, commercial, and industrial projects.

We provide Annual Maintenance Contracts (AMC) and specialized support for chute systems **and Automated Waste Collection Systems (AWCS)**. Our expertise also includes waste reduction strategies, recycling solutions, and practical support to help clients achieve efficient and environmentally-friendly waste management practices.

**WE ARE YOUR PARTNER FOR CLEAN BUILDINGS AND SMART WASTE SOLUTIONS, DELIVERING PRACTICAL, RELIABLE, AND EFFICIENT SERVICES THAT ENSURE CONTINUOUS PERFORMANCE, SAFETY, AND OPERATIONAL EFFICIENCY.**

## KEY SERVICES



## CHUTE SYSTEMS (GARBAGE & LINEN CHUTES)

# SMART, SAFE, AND HYGIENIC **VERTICAL** **SOLUTIONS** FOR MODERN BUILDINGS.



BIREX Solutions provides high-quality garbage and linen chute systems designed to improve cleanliness, efficiency, and daily operations in residential, commercial, and hospitality buildings.

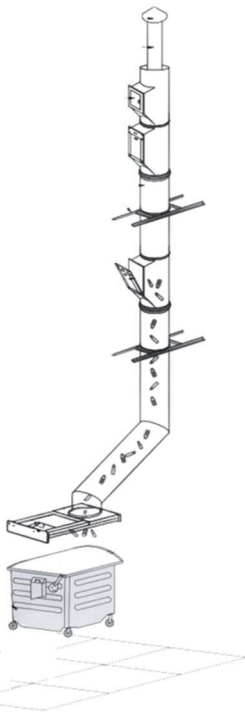
Our systems offer a secure, enclosed, and easy-to-use way to transport waste and laundry from any floor directly to the collection room – reducing odors, preventing mess, and saving time and labor.

Built with durable materials and advanced fire-safety features, **our chute systems help building owners, contractors, and facility managers create cleaner environments, streamline workflows, and enhance the overall value of their projects.**

# CHUTE SYSTEMS (GARBAGE & LINEN CHUTES)

## A SMARTER WAY TO KEEP YOUR BUILDING CLEAN AND EFFICIENT

Our chute systems provide a fast, safe, and hygienic way to move **waste** and **laundry** from upper floors straight to the collection room – with no mess, no odors, and no pressure on elevators or staff.

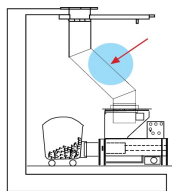


### **GARBAGE CHUTE – Cleaner, Easier Living**

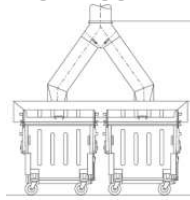
A fully enclosed system that keeps waste away from hallways, reduces odors, prevents pests, and improves overall hygiene while increasing your building's operational value.

**A SMART INVESTMENT THAT ENHANCES PROPERTY VALUE, REDUCES MAINTENANCE COSTS, AND DELIVERS A CLEANER ENVIRONMENT FOR THE ENTIRE BUILDING.**

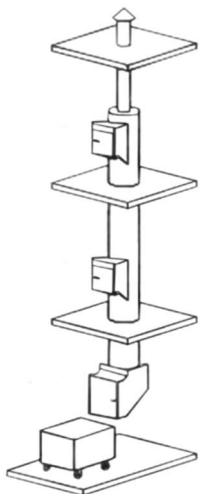
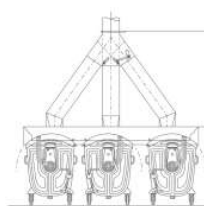
#### **1. SINGLE**



#### **2. TWO BI-SORTERS**



#### **3. TRI-SORTERS**

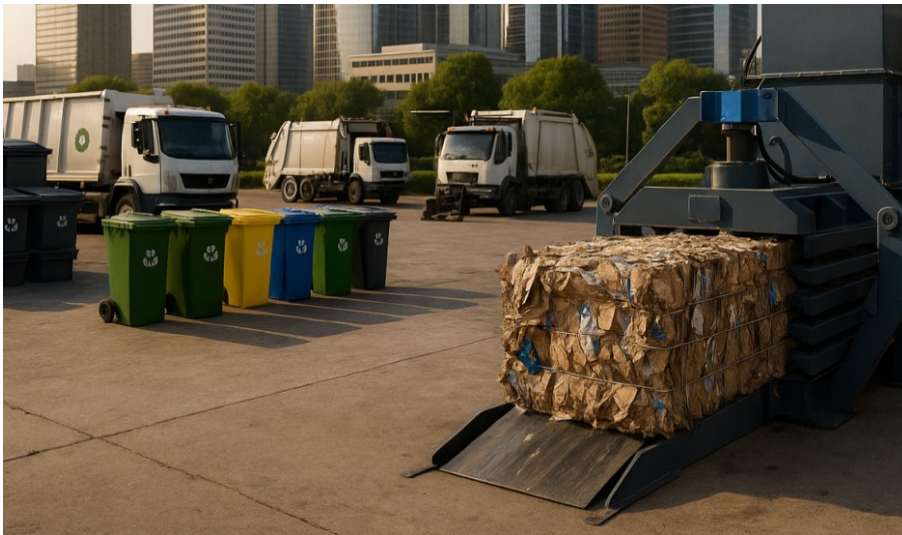


### **LINEN CHUTE – Faster, Professional Handling**

Designed for **hotels, hospitals, villas, duplex homes, and large buildings**, it safely transports soiled laundry directly to the central laundry room—improving workflow, reducing manual handling, and ensuring a cleaner, more efficient operation.

## WASTE COLLECTION OPERATIONS

# EFFICIENT, RELIABLE, AND SUSTAINABLE WASTE MANAGEMENT SOLUTIONS.



BIREX Solutions provides private waste collection services for residential, commercial, and industrial clients, specializing in **construction waste, carton, plastics, electronics, oil, and more.**

Our operations ensure that waste is collected promptly, safely, and efficiently, then prepared for recycling, resale, or proper disposal through trusted partner networks.

With a focus on **hygiene, sustainability, and regulatory compliance**, our services reduce operational burden for building owners, contractors, and facility managers, while supporting a cleaner and smarter environment.

## CLEANING & SUPPORT SERVICES

# RELIABLE, PROFESSIONAL, AND EFFICIENT SOLUTIONS FOR EVERY BUILDING AND EVENT.



BIREX Solutions provides specialized cleaning and maintenance support designed for **building owners, construction contractors, and apartment residents.**

Our team ensures clean, safe, and well-managed spaces by handling daily cleaning tasks, waste station operations, and on-demand support for events or high-traffic periods.

We also offer **annual membership-based maintenance services** for apartment owners and property managers, **covering cleaning, electrical support, minor repairs, pest control, sanitizing services, and general upkeep**—ensuring continuous comfort, safety, and reliable support throughout the year.

With flexible packages and professional teams, BIREX helps reduce operational workload, improve building hygiene, and maintain high standards that keep residents and occupants satisfied.

## EQUIPMENT & MACHINES

# HIGH-PERFORMANCE WASTE SOLUTIONS FOR EVERY **LARGE** **FACILITY**



Birex Solutions Delivers Advanced **Balers, Compactors, And Food-waste Systems** Built For Organizations That Generate Daily Waste And Require Fast, Clean, And Reliable Handling.

Our machines are designed to streamline waste handling, improve recycling efficiency, and reduce operational effort for residential, commercial, and industrial facilities.

With reliable **installation, ongoing maintenance, and expert support**, our equipment ensures smooth, safe, and long-lasting operations, helping clients manage waste in a smarter, cleaner, and more sustainable way.

## EQUIPMENT & MACHINES

# SMARTER FOOD WASTE MANAGEMENT STARTS HERE



**WE HELPS BUSINESSES TURN WASTE INTO VALUE — EVERY DAY.**

BIREX support the best compost machines transform food waste into usable compost within hours, helping businesses reduce waste volume, cut disposal costs, and operate sustainably. Designed for kitchens, hotels, universities, hospitals, and large facilities that generate daily organic waste.

**WASTE LESS.  
DO MORE.  
BUILD GREENER.**



Food Waste Composters  
ECO-30KSN Compost Fertilizer Machine –  
30kg Daily Compost Fertilizer Machines



Food Waste Composters  
ECO-130KSN Compost Fertilizer Machine –  
130kg Daily Compost Fertilizer Machines



Food Waste Composters  
ECO-80KSN Compost Fertilizer Machine –  
80kg Daily Compost Fertilizer Machine

## CUSTOM BINS & TROLLEYS

DURABLE, PRACTICAL,  
AND TAILORED SOLUTIONS  
FOR **EVERY WASTE  
MANAGEMENT NEED.** 



BIREX Solutions designs, supplies, and maintains **custom street bins, PVC and GI trolleys, and industrial containers** to fit the unique requirements of residential, commercial, and industrial facilities. Our products are built to **improve waste collection efficiency, enhance hygiene, and simplify handling**, providing a reliable and long-lasting solution for day-to-day operations.

With flexible designs and high-quality materials, our bins and trolleys help clients **manage waste smarter, cleaner, and more efficiently.**





# BIG IMPACT STATEMENT

**CLEAN BUILDINGS.  
SMART WASTE.  
ONE PARTNER FOR EVERYTHING.**



LET'S BUILD A  
CLEANER, SMARTER,  
AND SAFER FUTURE TOGETHER.

## **TRIPOLI, LEBANON**

Abi Samra, Bayan Highway  
Tripoli, North LBN, Lebanon

**M. : +961 7070 6140**

## **BEIRUT, LEBANON**

Jal El Dib Highway, Near  
Najjar Café Beirut, Lebanon

[info@birexsolutions.com](mailto:info@birexsolutions.com)

## **QATAR**

P.O. Box: 11742 Doha, Qatar  
Al Rayyan, Al Azizia, Ibn Sina Street 94, Bldg. 26, F2/23 |

**M: +974 5091 5277 | M: +974 3354 2404**